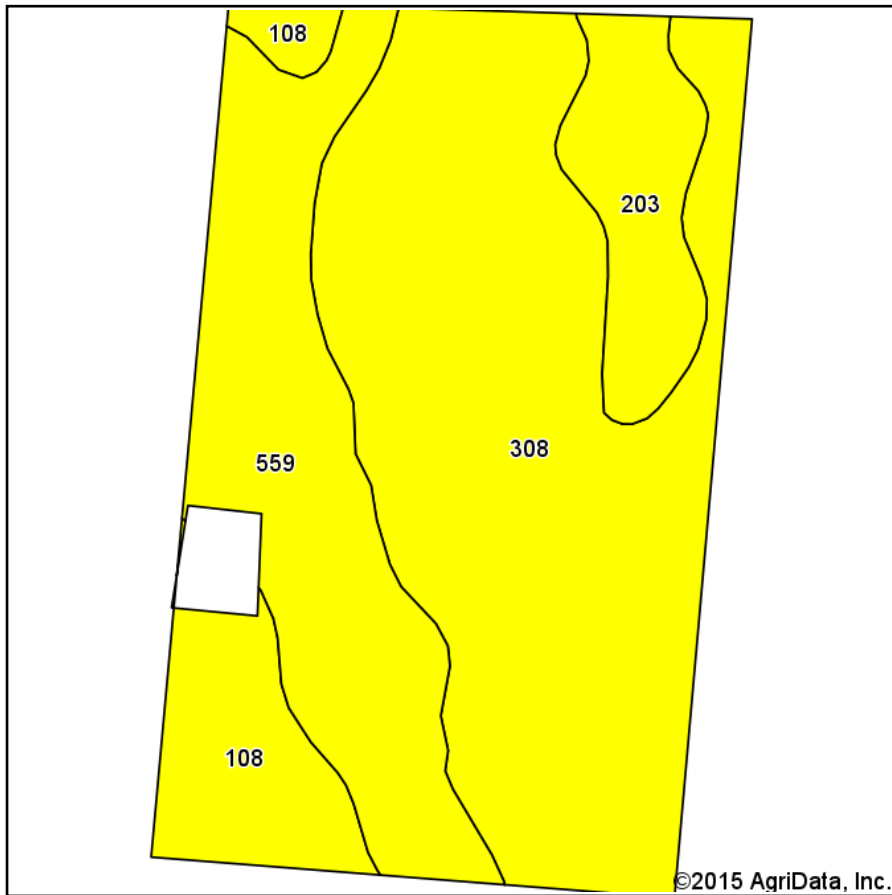
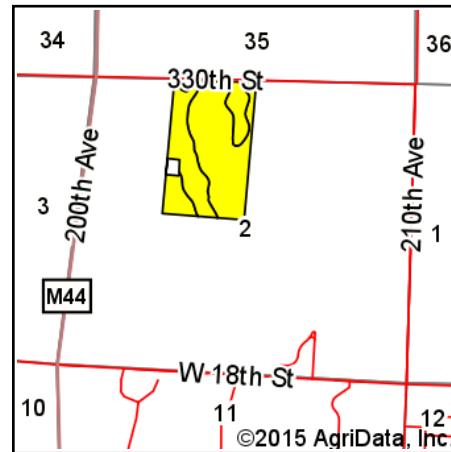


Soils Map-CSR2



Soils data provided by USDA and NRCS.



State: **Iowa**
 County: **Clay**
 Location: **2-96N-37W**
 Township: **Riverton**
 Acres: **69.12**
 Date: **10/5/2015**

MIDWEST LAND
 & REAL ESTATE, INC
 712-262-3110 MANAGEMENT

Maps Provided By:



Area Symbol: IA041, Soil Area Version: 22

Code	Soil Description	Acres	Percent of field	CSR2 Legend	Non-Irr Class *c	CSR2**	CSR
308	Wadena loam, 32 to 40 inches to sand and gravel, 0 to 2 percent slopes	38.32	55.4%		Ils	60	65
559	Talcot clay loam, 32 to 40 inches to sand and gravel, 0 to 2 percent slopes	17.58	25.4%		Ilw	52	65
108	Wadena loam, 24 to 32 inches to sand and gravel, 0 to 2 percent slopes	7.02	10.2%		Ils	55	52
203	Cylinder loam, 32 to 40 inches to sand and gravel, 0 to 2 percent slopes	6.20	9.0%		Ils	59	71
Weighted Average						57.4	64.2

Area Symbol: IA041, Soil Area Version: 22

*IA has updated the CSR values for each county to CSR2.

°c: Using Capabilities Class Dominant Condition Aggregation Method

Soils data provided by USDA and NRCS.